

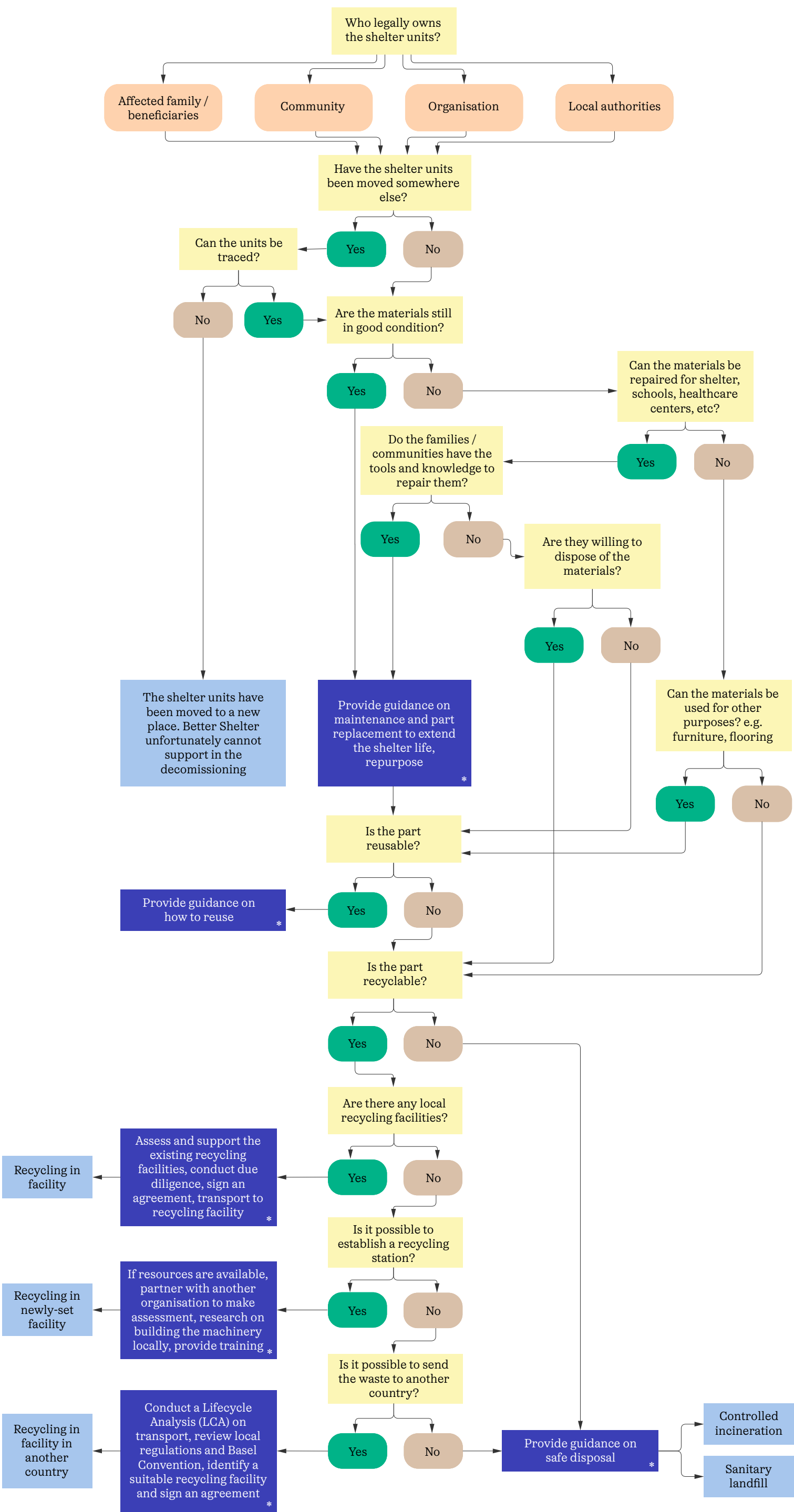
# WASTE MANAGEMENT RECOMMENDATIONS

When a shelter unit reaches the end of its useful life, leaving it behind isn't an option. We follow and recommend the humanitarian sector's best practices to ensure it's handled responsibly. This waste management hierarchy should guide decision-making when shelter materials reach the end of their useful life. In order of preference, the steps are:



## END OF LIFE DECISION TREE

This tool aims to guide the team responsible for the decommissioning of the shelter units from Better Shelter in selecting appropriate waste management interventions, facilitating informed choices and collaboration



(\*) Better Shelter can support and provide guidance (under development). For more information please reach out to: [support@bettershelter.org](mailto:support@bettershelter.org)

[www.bettershelter.org](http://www.bettershelter.org)